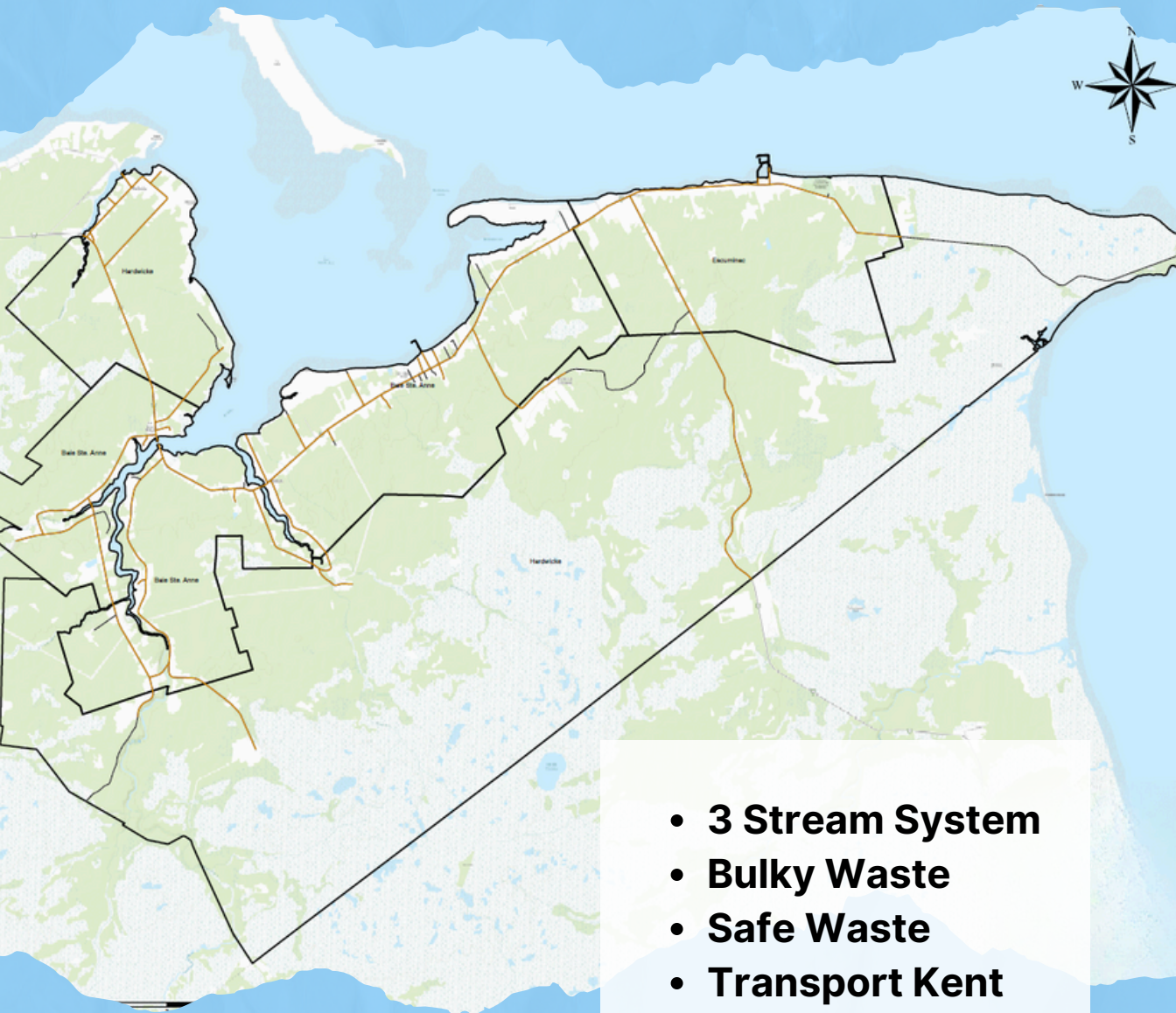




# CHANGES TO WASTE COLLECTION

Baie-Sainte-Anne / Escuminac / Hardwicke



- **3 Stream System**
- **Bulky Waste**
- **Safe Waste**
- **Transport Kent**



# 3 Stream System

From **December 29, 2024**, a new sorting system for collecting your waste will come into effect. **A sorting list, collection schedule and bags will be mailed to residents as a starter kit before the change takes effect.**

## Recyclables

- Collected in alternance with garbage.
- Loose recyclable material is placed directly in your **blue bin** (plastic, cardboard, paper, metal, styrofoam, small electronics).



**Blue container**

## Organics

- Collected every week.
- Organics, such as food waste (meat, dairy, vegetables, ect.) and yard waste must be placed in a **green transparent bag**.
- Minimum bag size of 20 x 22 inches.



**Green bag**

## Garbage

- Collected in alternance with recyclables.
- Waste (diapers, hygiene products, pet waste, makeup, clothes etc.) must be placed in a **clear transparent bag**.
- Minimum bag size of 20 x 22 inches.



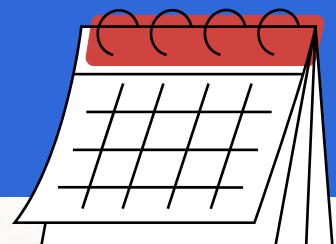
**Clear bag**

Tip: Always place your green bags on top of the clear bags for easy access every week.



## Collection in alternance

- Week 1 / December 29th to January 4th: Green and Clear**
- Week 2 / January 5th to January 11th: Green and Blue**
- Week 3 / January 12th to January 18th: Green and Clear**
- Week 4 / January 19th to January 25th: Green and Blue**
- Week 5 / January 26th to February 1st: Green and Clear**



# CHANGES TO WASTE COLLECTION

- Collection day will change to **Monday mornings** beginning **December 30, 2024**.
- \*For reasons beyond our control, the collection on **Tuesday, December 24th (old system)** and that of **Monday, December 30th (new system)** will both be a waste collection week. **The rotation between recycling and waste will resume thereafter (see collection schedule).**
- We have provided you with free blue bags in this kit to place next to your bin the week of January 5th in case your bin overflows.

	Week of Dec 22nd	Week of Dec 29th	Week of Jan 5th
<b>ORGANIC</b>			
<b>RECYCLABLES</b>			
<b>WASTE</b>			

- Starting Dec. 29th, place your bags/bins at the roadside on **Sunday evenings** (collection will begin at **4 am** on Mondays).
- **Do not put bags in your blue bins.** These bins will be emptied into the truck using electronic arms.

# CHANGES TO WASTE COLLECTION

You don't need to buy a 3rd bin, do this instead:



- Use one bin for your green and clear bags.
- Keep the **green bags on top of the clear bags** so they are picked up weekly.
- During the clear week, the bin will be completely emptied.
- During blue week, only green bags will be collected.
- **Garbage collectors will not rummage through bins to find hidden bags.**

Contact us for more information:

[www.krsc.ca](http://www.krsc.ca)

506-743-1490

toll free: 1-855-588-1125



*The free app gives you collection reminders, a sorting guide, interruption alerts and more...*

*If your trash is not collected the week of December 30th, call Fero:*

Fero Waste & Recycling Inc.:

1-506-855-3376

or toll-free 1-800-668-3376

Commission de services  
régionaux de Kent



Kent Regional  
Service Commission



# BULKY WASTE

## Service by Registration

- Register **BEFORE** placing your bulky waste at the side of the road.
- Once registered (online or by phone) you will receive a collection date for these items.
- Be a good neighbour, only put your items out the weekend before the date indicated.
- Garbage collectors have all week to complete the collection.
- We collect up to six (6) large items at a time.

**DON'T WAIT, REGISTER AS SOON AS YOU HAVE A FEW ITEMS TO THROW AWAY!!**



## HOW DO I REGISTER?



**Scan me to register online!**

You can register **online** by filling out our simple form or give us a call at **506-743-1490** or **1-855-588-1125**

[WWW.KRSC.CA/SOLID-WASTE/#BULKY](http://WWW.KRSC.CA/SOLID-WASTE/#BULKY)



# Safe Waste

Your trash goes through several sets of hands during collection and sorting. **Help us protect them!**



## Your bags:

- Should be tied.
- Should be easy to access.
- Should be the right colour and placed together, as much as possible.



## Your bins:

- Should be free from pests (wasps, mice, raccoons, etc.)
- Shouldn't be too deep (easy access to bags in the bottom)
- You should remove snow and ice from on and around your bins.



## Sharp Items:

- Items such as broken glass or knives should be wrapped in paper or put into a container before being placed in your bags.

**Never throw the following out with your ordinary trash. These items can be brought to an Eco-Depot near you.**

- Propane tanks
- Compact fluorescent lightbulbs
- Paint
- Batteries
- Chemicals

